



Becklow Road W12



Becklow Road W12

TERRACED HOUSE

3 BEDROOMS

**DOUBLE RECEPTION ROOM WITH WOOD
FLOORING**

SPACIOUS KITCHEN

SOUTHERLY GARDEN

COUNCIL TAX BAND F

DOWNSTAIRS WC AND STORAGE SPACE

AVAILABLE NOW



A lovely 3 bedroom house with a double reception which has painted wood flooring that flows through to the full width kitchen/breakfast room to the rear where there is ample space for a dining table. Glass concertina doors open to the southerly garden which is paved and lawned. There is a guest cloakroom off the hallway and storage space. The first floor half landing has a bedroom to the rear and the family bathroom. Off the main landing to the front is the principal bedroom with second double bedroom behind. Available now. Council Tax Band F.

£726 PER WEEK

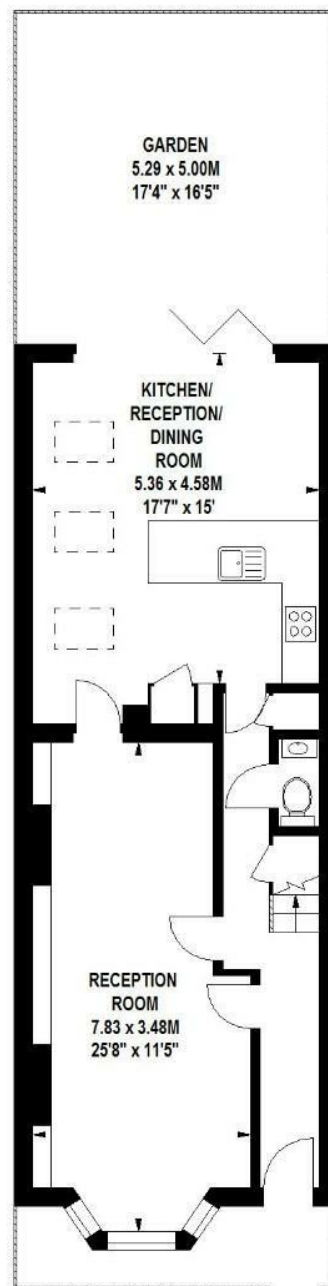
SUBJECT TO CONTRACT











Becklow Road, W12

Approximate gross internal area
113 sq m / 1216 sq ft

